

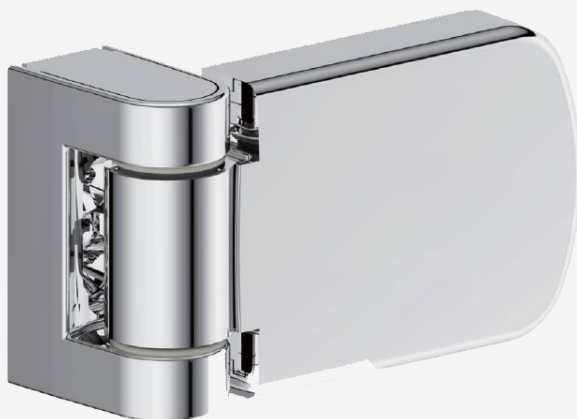
Security Door Hinge

Features

- ✓ High security hinge to meet the requirements of PAS24
- ✓ Supplied as 3 ready assembled parts for super fast and easy fitting
- ✓ To suit rebate height from 17-25mm without shims or packers
- ✓ Totally independent 3 axis adjustment
- ✓ One size hex key fits all 3 adjusters
- ✓ Die cast cover caps to give a perfect colour match
- ✓ Helpful adjustment guide on protective film cover

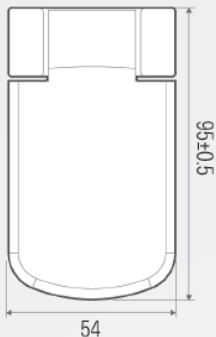
Specification

- **Lifecycle Performance:** Tested to 200,000 cycles
- **Load Performance:** Tested to 100kg with 3 hinges
- **Corrosion Resistance:** 480 Hours Neutral Salt Spray Test
- **Hinge Frame, Leaf, Cover:** Zinc alloy
- **Hinge Pin, Screws:** Stainless Steel
- **Powder Coat:** White, Black, Anthracite Grey
- **Powder Multi Layer:** Chrome, PVD Gold, Satin Chrome, Brush Nickel, Rose Gold
- **Box Quantity:** 12

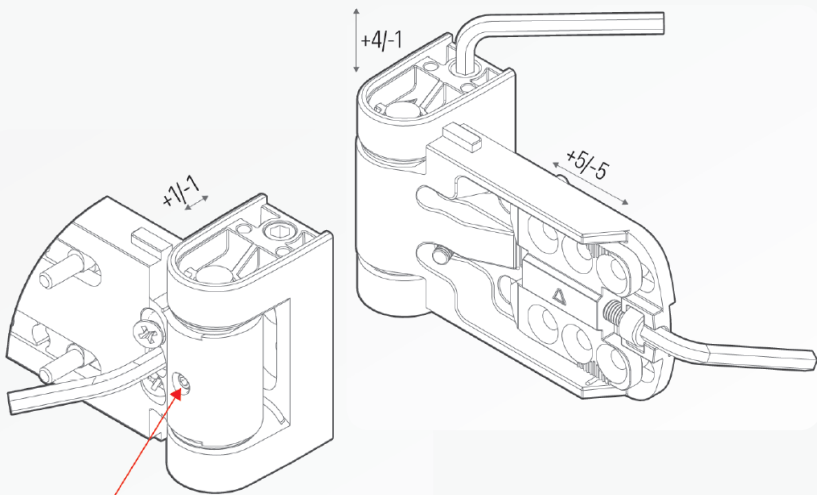
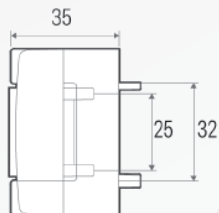
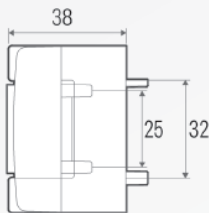
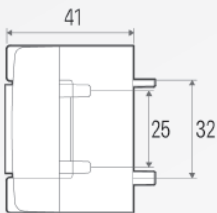
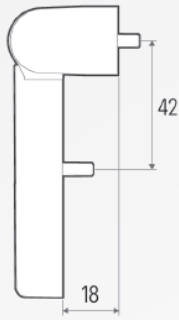
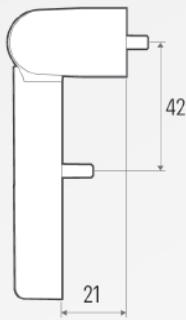
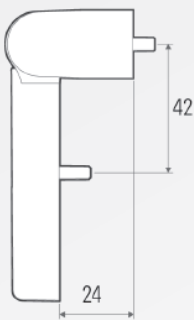


Security Door Hinge

Unit: mm



Upstand Options Available



Ensure security screw is tight after door is installed